



UNIVERSITAS NEGERI SURABAYA

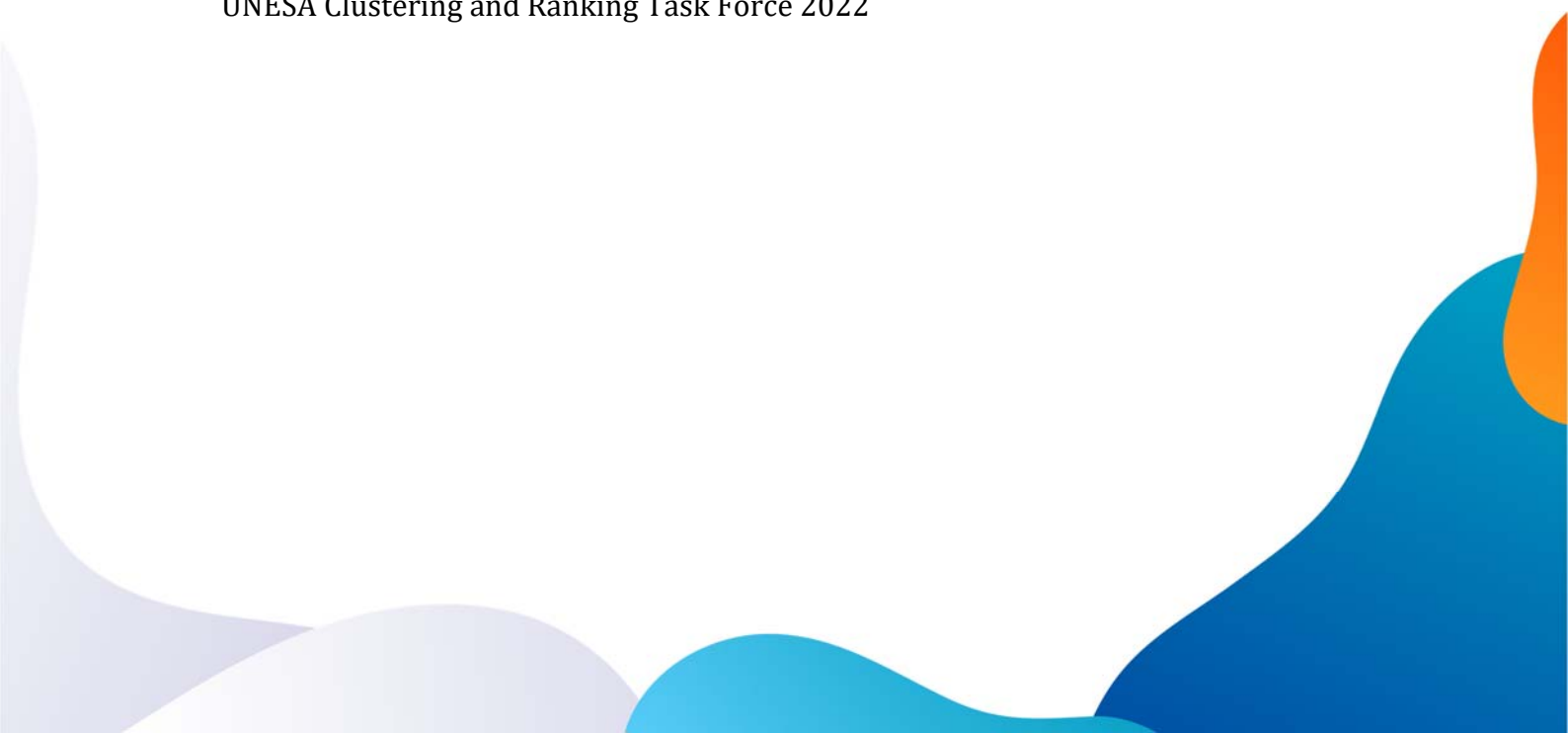
SUSTAINABILITY REPORT

2022



Universitas Negeri Surabaya
Sustainability Report 2022

Edited by:
UNESA Sustainability Environment Team 2022
UNESA Clustering and Ranking Task Force 2022



01

Introduction



02

Vision Mission and Goals
of Universitas Negeri
Surabaya



03

Sustainability aspect
concerned in Universitas
Negeri Surabaya



Setting & Infrastructure



Energy & Climate Change



Waste



Water



Transportation



Education & Research

INTRODUCTION

HISTORY

IKIP Surabaya has officially become an educational institution that produces educational staff since December 19, 1964 based on the Decree of the President of the Republic of Indonesia Number 269 of 1965. Ratified the establishment of a State Institute in Surabaya as referred to in the Decree of the Minister of Higher Education and Science Number 182 of 1964 dated December 24, 1964 The Institute's "FIRST" sub at the present time consists of:

1. Faculty of Education.
2. Faculty of Social Sciences Teacher Training.
3. Faculty of Arts and Literature Teacher Training.
4. Teaching Faculty of Exact Sciences.
5. Faculty of Engineering Teacher Training.

IKIP Surabaya turned into Universitas Negeri Surabaya (Unesa) based on SK Presiden R.I. nomor 93/1999 dated August 4, 1999 by managing six faculties, namely:

1. Faculty of Education.
2. Faculty of Language and Literature.
3. Faculty of Mathematics and Natural Sciences.
4. Faculty of Social Sciences.
5. Faculty of Engineering.
6. Faculty of Sports Science.
7. Faculty of Economy and business
8. Vacational program

Currently, Unesa manages 63 study programs, both educational and non-educational, with diploma, undergraduate, and postgraduate levels consisting of undergraduate and doctor. Because Unesa's journey cannot be separated from IKIP Surabaya, Unesa's birthday still uses Surabaya IKIP's anniversary.

VISION

EXCELLENT IN EDUCATION STRONG IN SCIENCE

MISSION

1. Organizing learner-centred education and learning by using an effective learning approach and optimizing the use of technology.
2. Conducting research in educational sciences, natural sciences, socio-cultural sciences, arts, and/or sports, and developing technology whose findings are beneficial for the development of science and public welfare.
3. Disseminate science, technology, arts, culture and sports, as well as research results through community service activities that are oriented towards community empowerment and culture.
4. Realizing Unesa as an educational center, especially primary and secondary education as well as a scientific center based on the noble values of national culture.
5. Organizing an autonomous, accountable, and transparent university meeting that ensures quality and continuous quality improvement.

GOALS

1. Produce graduates who are intelligent, religious, noble, independent, professional, and have advantages;
2. Produce scientific works and creative works, both in the field of education and science that are superior and become references in the application of science and/or technology;
3. Produce works of community service through the application of science and/or technology to create an independent, productive, and prosperous society;
4. Realizing Unesa as an educational center and a scientific center based on the noble values of national culture;
5. To produce effective and efficient institutional performance by creating a humanistic academic climate, transparent, accountable, responsive, and fair institutional management to ensure the quality of the implementation of the tridharma of higher education in a sustainable manner.



Setting and Infrastructure (SI)



Campus Sites



Unesa central campus in the Lidah Wetan area is in an urban setting with an area of 72.0745 hectares. Situated in the West Surabaya City Region, The Lidah Wetan Campus features a lot of greenery and a lake, complete sports facilities, a

campus forest for the Merdeka Belajar Laboratory, dormitories, and support facilities for education and research. Located conveniently 13.5 km from the city center, this campus could be reached by public transport in around 45 minutes.

The Ketintang campus is the oldest establishment of Surabaya State University with a land area of 22.8569 hectares and located 11.3 km from Lidah Wetan Campus. Although it has a smaller area, five

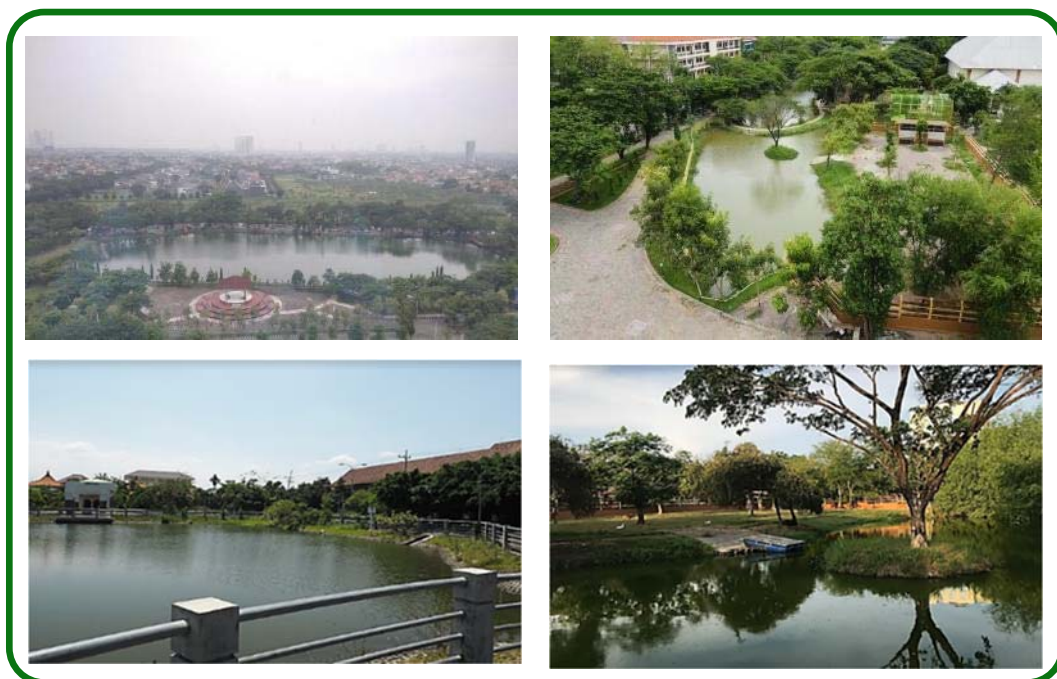


faculties are located there including Social Sciences, Mathematic-Natural Science, Engineering, Economics and Vocational

Campus Greenery and Water Conservation (768,462.9 m2)



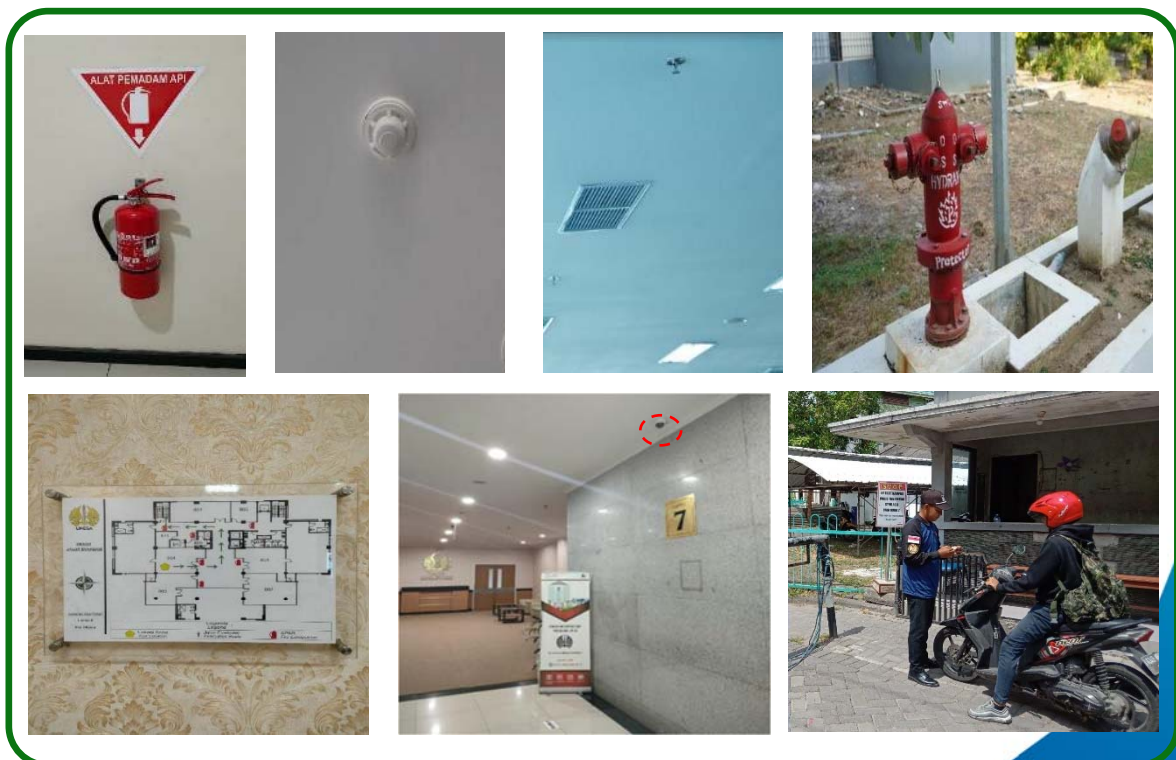
UNESA is committed to optimizing carbon sink by planting trees and increasing the vegetation area that has reached 84% of the total campus area. This area also functions as a water absorption site, plus a lake and five ponds as a water conservation site.



Campus facilities for the disabled, special needs, safety, and security



Accessibility access for students and staff with special needs is provided by UNESA to create a disability-friendly university environment, including a special parking spot, ramp access wheelchair, special toilet, and elevator with braille letter buttons, and information. CCTV Cameras and security checks are implemented to ensure campus security, while smoke detectors, water sprinklers, and fire extinguisher are installed to prevent fire disasters in campus.



Health infrastructure facilities



The Surabaya State University Polyclinic is located on two campuses, Ketintang Campus Polyclinic is located in the Unesa Business Center while the Lidah Wetan Campus Polyclinic is located within the Faculty of Sports Science (FIO). Unesa Polyclinic is a service unit that provides assistance in the health sector for the entire Unesa academic community. Moreover, this polyclinic also provides services for the community around the campus. Health infrastructure, such as **first aid, emergency room, clinic, and certified personnel are available**. The Unesa Polyclinic also holds annual activities, starting from conducting medical tests for prospective new Unesa students, ranging from color blindness tests to drug-free tests. In addition, every faculty and department at Unesa has been equipped with a Health Unit room.

Energy and Climate Change [EC]



Universitas Negeri Surabaya is devoted to reducing the usage of energy by using it sparingly, choosing energy efficient (LED lighting and low wat) appliances, and using renewable energy sources (solar panels).

Energy Efficient Appliances



Eco Air Conditioner

About > 85%



LED lights



About >88%



To conserve and maintain the efficient use of electrical energy, an appeal is campaigned to turn off electrical equipment that is not in use as well as periodic Air Conditioner maintenance.



Renewable Energy Sources



Solar Panel

55 Units, 29.7 m²



59,400 kWh/Years



Waste (WS)



Universitas Negeri Surabaya is faithfully developed sustainable waste management practices with reducing, reusing, and recycling principles.



Most UNESA Organic wastes (>50-75%) are recycled, with composting and bio-enzyme making as an alternative method.

Inorganic Waste Treatment



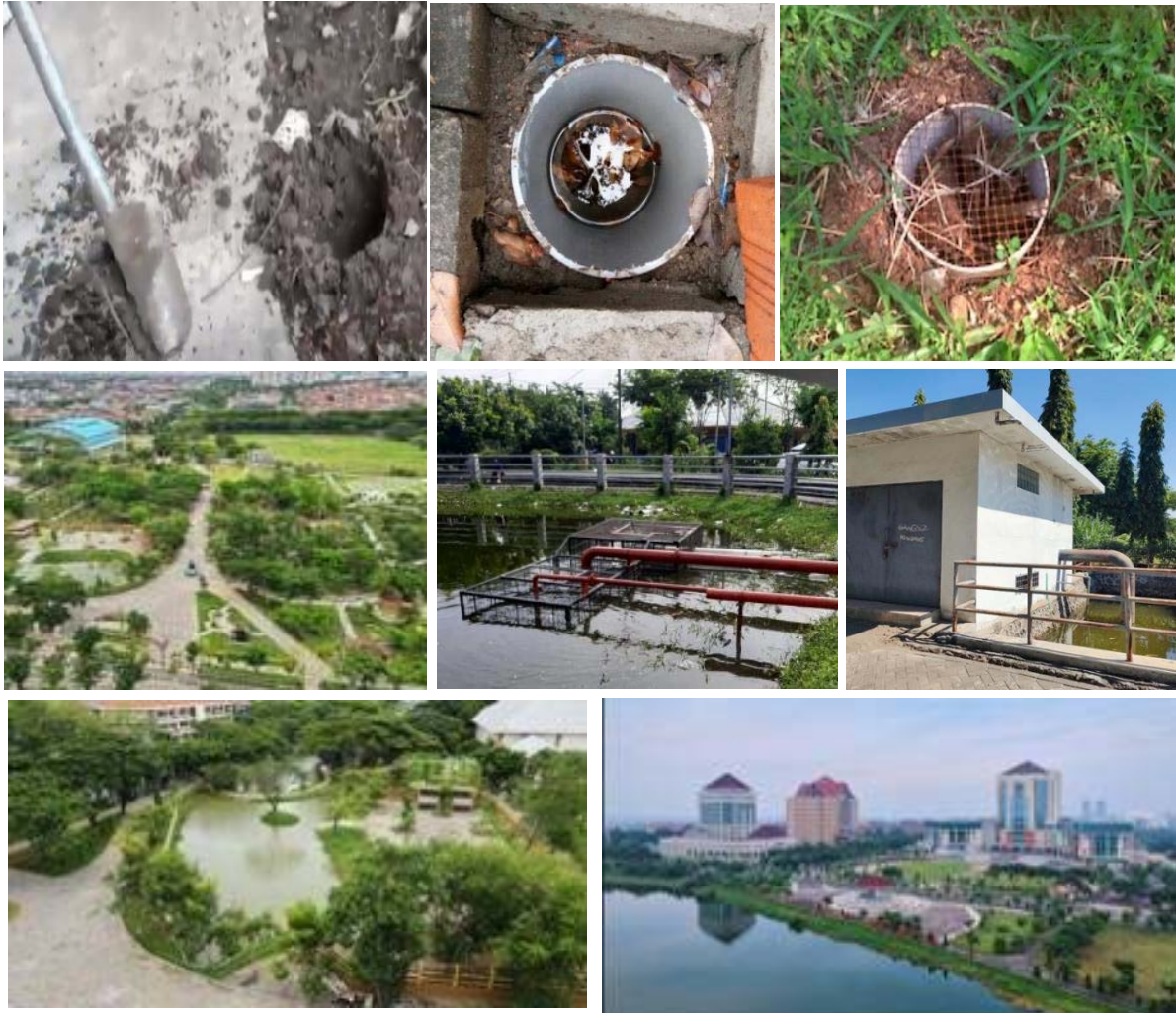
UNESA established initiatives for a plastic and paper diet programs.

- For reducing the use of plastics bottles and liquid packaging, campus community must bring their own tumbler/drinking bottle/glass.
- The e-office system for academic, finance, career and others need is applied to reduce the use of paper.
- Unavoidable plastic packaging would be recycled, one of the methods is creating eco-brick.

4 Water (WR)

Universitas Negeri Surabaya (UNESA) sustainability programs for water, consist of water conservation, water recycling, water efficiency programs, and drinking water production.

Water Conservation



UNESA conserve ground water by making bio pores, infiltration well, greenery and campus forest for optimize rain water absorption into the ground. UNESA also supports a zero delta-Q policy on its drainage system to reduce the surface runoff by providing several ponds complete with door and pump house facilities. Furthermore, it is necessary to maintain the surface and subsurface drainage system to optimize the function. area. It has been succeeded in conserving about 50% to 75% of the water.

Water Recycling



Wastewater from several places that has been treated and is fit for use is then channeled to the Pond. The recycled water is also used to water the sport field facilities in the campus area, garden sprinkler system, toilet flush, cooling system, aquaponics, fishponds, and watering plants in the campus forest and the campus area.

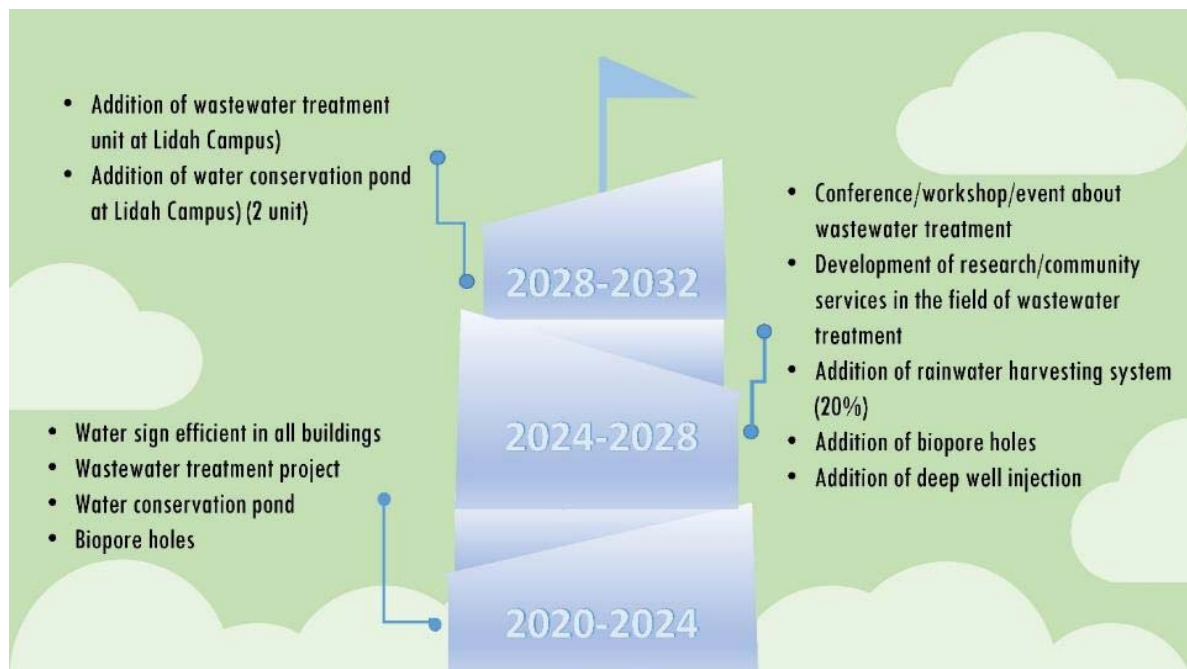
UNESA swimming pool uses a water filtration and recycle system that can treat swimming pool water so it can be use over and over again with only disposal of 1.5 m³ treated grey water every two weeks. The grey water will be processed until it can be flow to the pond for reuse.

Water Efficient Program



About > 50 % of buildings in Universitas Negeri Surabaya have installed water-efficient appliances, including high efficient toilet flush and water tap.

Universitas Negeri Surabaya milestone on creating water sustainability is shown below:



5 Transportation (TR)



The commuting of lecturers and students from their home/residence to campus need a means of transportation. The sustainability transportation program that environment friendly and produce low carbon emission should be encouraged. The Universitas Negeri Surabaya initiative for transportation consist of:

- 1) Encourage students and lecture to use public transport
Surabaya municipality established “Bus Suroboyo” since 2018 and now have already three corridor that can reach UNESA (in west Surabaya) from three different Surabaya region.
- 2) UNESA will build bicycles station near Bus Suroboyo bus stop beside the campus entrance to facilitate students, lectures and staffs, whose use these mean of transportation. Ministry of youth and sports already have commitment to provide 200 bicycles for this program.
- 3) Limiting parking space, apply parking ticket and recommend UNESA campus community to share ride (car or motorcycle) with each other.
- 4) Encourage UNESA campus community to go to campus using environment friendly vehicle such as bike to campus or using hybrid or electric vehicle.
- 5) Make bike lane and pedestrian on campus and create free motorize vehicle zone.
- 6) Create car free day event regularly.



Education and Research (ED)



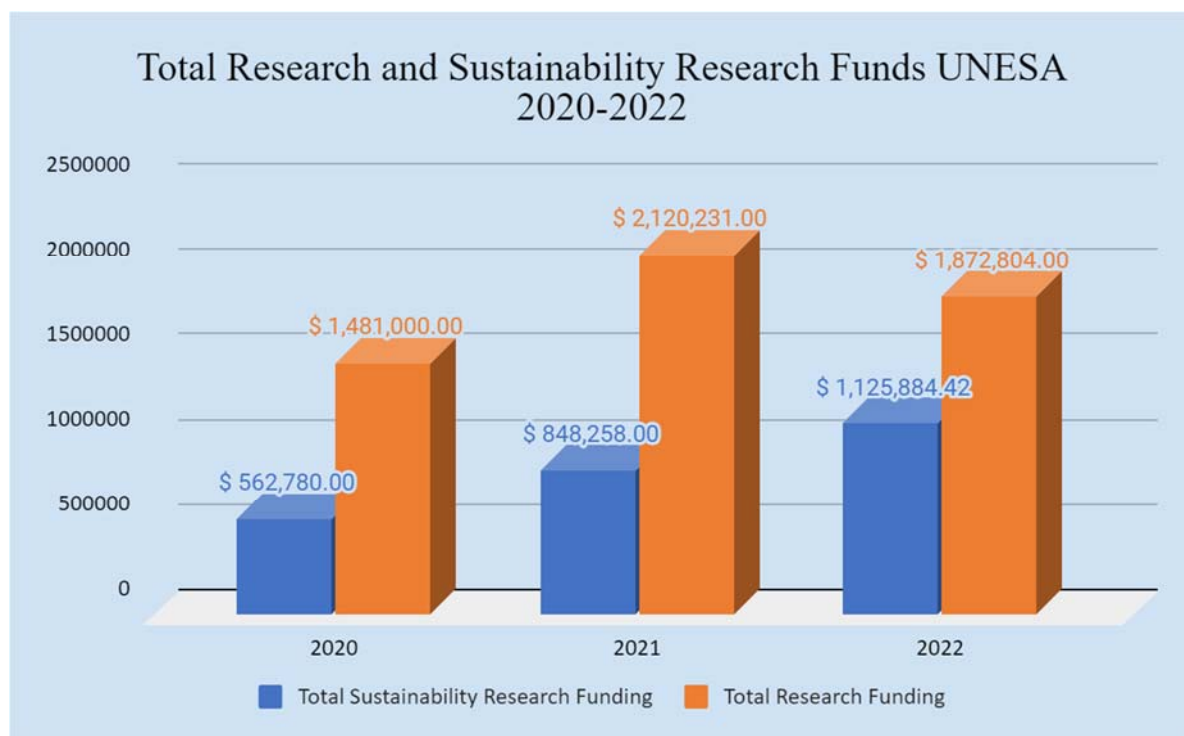
Total Number of Courses/Subjects Offered

Universitas Negeri Surabaya's (UNESA's) contribute to the sustainability in higher education by accommodating the topic in the form of courses, research and community service. The topic of sustainability is integrated to the courses/subjects that can be related to the SDGs in the department across all faculty in UNESA. The courses/subjects incorporated topics related to social sustainability, ethics, justice, equality, environment awareness, conservation of biodiversity, cultural value, sustainable development, continuing education, self-empowerment, and practical skills development.

A number of courses/subjects related to sustainability are offered in 1576 subjects from total 6547 courses/subjects offer in UNESA.

The sustainability-related courses can be accessed through the website: <https://bakpk.unesa.ac.id/page/buku-pedoman-2022>.

Total Research Funds Dedicated to Sustainability Research (in US Dollars)



The amount of funding for sustainability research in UNESA from 2020 to 2022 have increasing trend (\$ 562,780.00 to \$ 1,125,884.42) with three years average of \$ 845,640.81.

Number of Scholarly Publications on Sustainability

Google Scholar search results for "the university of surabaya" "surabaya state university" & green & sustainability. The search returned approximately 825 results in 0.03 seconds.

Articles

- THE EFFECT OF GREEN CHEMISTRY LABORATORY LEARNING ON PRE-SERVICE CHEMISTRY TEACHERS ENVIRONMENTAL VALUE ORIENTATIONS AND ...** [PDF] unesa.ac.id
 AS Wahyuningsih, S Poediasastoeti ... - JPPS (Jurnal Penelitian ... - 2015 - journal.unesa.ac.id
 ... 'environmental value orientations, creative thinking skill, and profile of creative attitude after the implementation of Green Chemistry ... Jurusan Kimia Universitas Negeri Surabaya mulai ...
 ☆ Save Cite Cited by 8 Related articles
- The Research Agenda of Green Education in Enhancing Environmental Concern and Green Consumption** [PDF] scie-journal.com
 A Mursid, D Fehabutar, D Wulandari ... - Studies in Learning ... - 2021 - scie-journal.com
 ... environmental education and environmental concern in the future. Based on the importance of educating the public or society about environmental ... in taking environmental education ...
 ☆ Save Cite Cited by 2 Related articles All 2 versions
- ... SOCIO-SCIENTIFIC ISSUES LEARNING MODEL IN ENVIRONMENTAL KNOWLEDGE COURSE TO TRY LIFE SKILLS IN THE STATE UNIVERSITY OF SURABAYA** [HTML] umpwr.ac.id
 E Listyoningsih, RD Saputro ... - CONFERENCE ON EDUCATION, 2017 - ipm.umpwr.ac.id
 ... In doing so, involving 29 students majoring Biology Education enrolled in Environmental Knowledge course, to observe student's life skills and student's achievement. Data were ...
 ☆ Save Cite Related articles All 4 versions
- PENGARUH GREEN INNOVATION TERDAHAP ECONOMIC PERFORMANCE DENGAN ENVIRONMENTAL MANAGEMENT ACCOUNTING SEBAGAI VARIABEL ...** [PDF] undip.ac.id
 M Mariyamah, S Handayani ... - JURNAL AKUNTANSI DAN AUDITING - ejournal.undip.ac.id
 ... The moderating variable in this study is environmental management accounting measured ... that green innovation has a positive effect on economic performance and environmental ...
 ☆ Save Cite Related articles

The total average per annum of **scholarly publications on sustainability** in the last 3 years (2020 to 2022) is **825 publications**

Number of Events Related to Sustainability



A total number of sustainability/environment-related events in:

2019/2020: 17

2020/2021: 37

2021/2022: 29

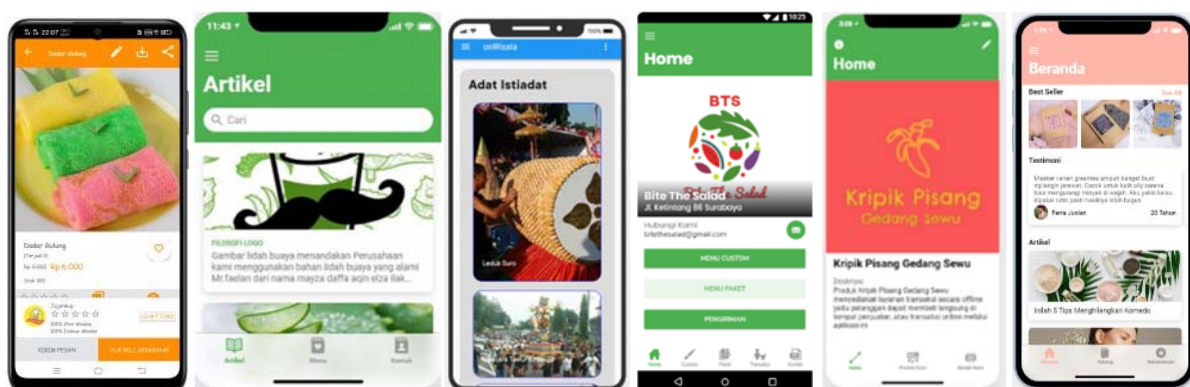
A total average per annum over the last 3 years of 83 events

Number of Sustainability Community Services Project

Project name	Participants	Project duration	Project area
Kuliah Kerja Nyata (KKN)	14,926	6 months	East Java
Waste and waste management	132	1 year	East Java
Community service and science and technology marketing	1345	1 year	PKM Partners
On-campus transportation service	234	1 year	
Eco campus and independent learning laboratory management	20,000	3 days per week	MBKM Laboratory
Technology Business Incubator	500	12 month	LPPM Unesa and Societies
Center for Cultural Studies	10	3 year	Target Areas and Partners
Literacy Center	10	3 year	
Gender and Child Studies	10	3 year	Target Areas and Partners
Disability Services	50	3 year	Target Areas and Partners

The sustainable community service project is always carried out continuously by lecturers, education staff, and students. The implementation is in the campus area and surrounding areas which are the targets for achieving the Main Performance Indicators of higher education as a form of campus contribution in overcoming environmental problems, waste management, and reforestation carried out on campus and surrounding areas.

Number of Sustainability Related Startups



UNESA provides education, training and guidance for students to develop technology-based entrepreneurship. Students will develop entrepreneurial proposals and mobile applications for marketing. In the last three years, there have been twenty applications and eleven proposals that will be further developed.