






UNIVERSITAS NEGERI SURABAYA

2021

SUSTAINABILITY REPORT



TABLE OF CONTENTS

Introduction	
Vision Mission and Goals of Universitas Negeri Surabaya	
Sustainability aspect concerned in Universitas Negeri Surabaya	
Energy	
Water	
Waste	
Transportation	
Education and Research	

INTRODUCTION

HISTORY



IKIP Surabaya has officially become an educational institution that produces educational staff since December 19, 1964 based on the Decree of the President of the Republic of Indonesia Number 269 of 1965. Ratified the establishment of a State Institute in Surabaya as referred to in the Decree of the Minister of Higher Education and Science Number 182 of 1964 dated December 24, 1964 The Institute's "FIRST" sub at the present time consists of:

1. Faculty of Education.
2. Faculty of Social Sciences Teacher Training.
3. Faculty of Arts and Literature Teacher Training.
4. Teaching Faculty of Exact Sciences.
5. Faculty of Engineering Teacher Training.

IKIP Surabaya turned into Universitas Negeri Surabaya (Unesa) based on SK Presiden R.I. nomor 93/1999 dated August 4, 1999 by managing six faculties, namely:

1. Faculty of Education.
2. Faculty of Language and Literature.
3. Faculty of Mathematics and Natural Sciences.
4. Faculty of Social Sciences.
5. Faculty of Engineering.
6. Faculty of Sports Science.
7. Faculty of Economy and business
8. Vacational program

Currently, Unesa manages 63 study programs, both educational and non-educational, with diploma, undergraduate, and postgraduate levels consisting of undergraduate and doctor. Because Unesa's journey cannot be separated from IKIP Surabaya, Unesa's birthday still uses Surabaya IKIP's anniversary.

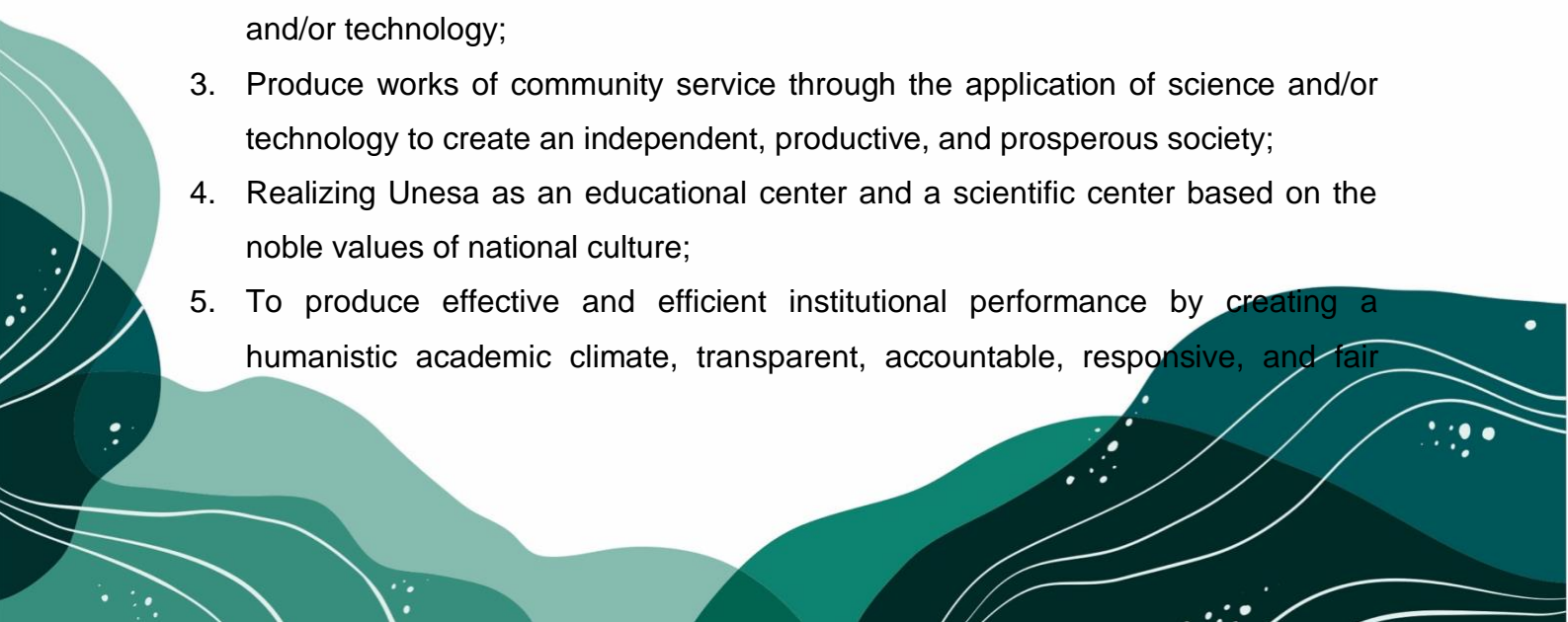
VISION

EXCELLENT IN EDUCATION STRONG IN SCIENCE

MISSION

1. Organizing learner-centred education and learning by using an effective learning approach and optimizing the use of technology.
2. Conducting research in educational sciences, natural sciences, socio-cultural sciences, arts, and/or sports, and developing technology whose findings are beneficial for the development of science and public welfare.
3. Disseminate science, technology, arts, culture and sports, as well as research results through community service activities that are oriented towards community empowerment and culture.
4. Realizing Unesa as an educational center, especially primary and secondary education as well as a scientific center based on the noble values of national culture.
5. Organizing an autonomous, accountable, and transparent university meeting that ensures quality and continuous quality improvement.

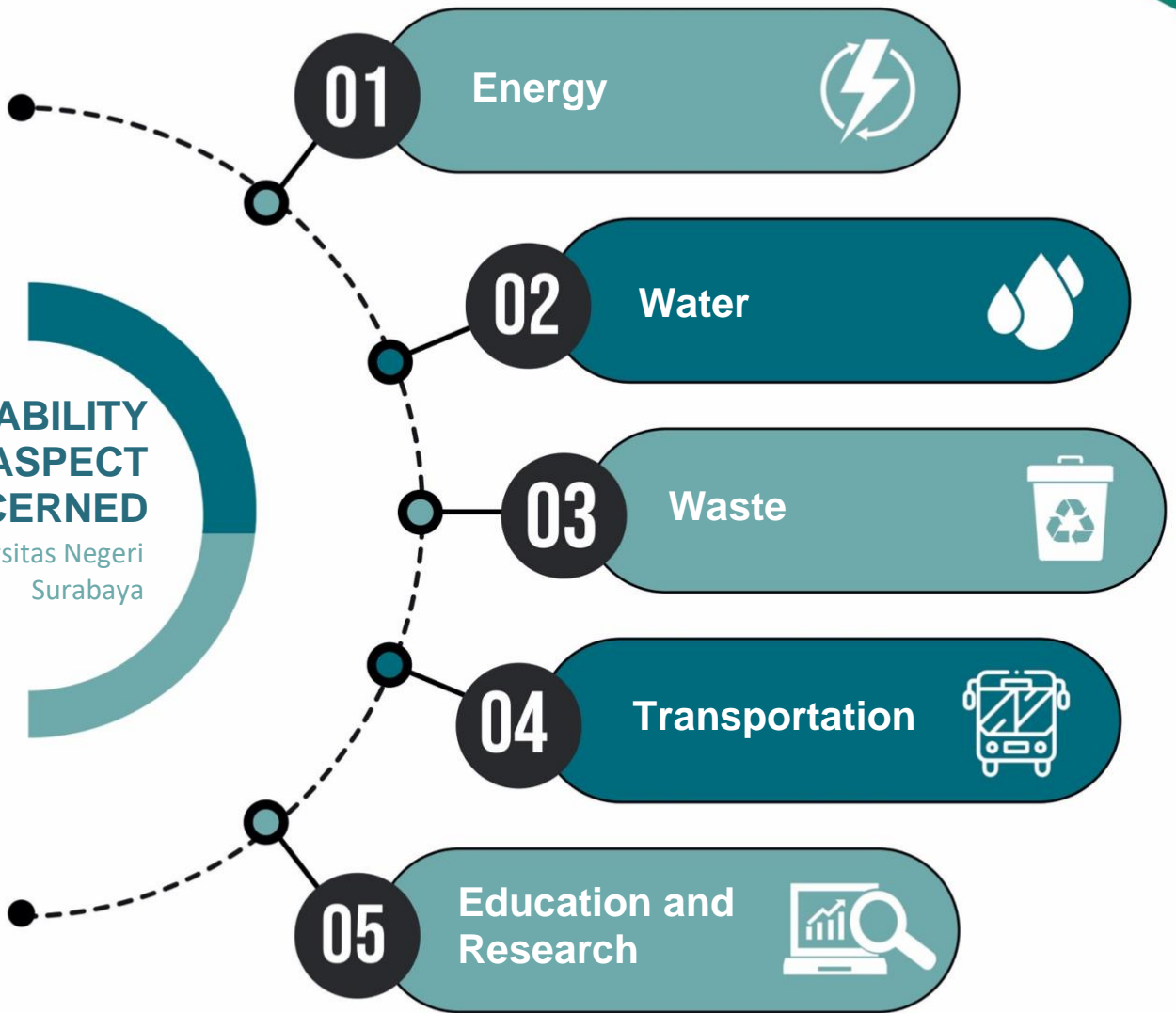
GOALS

1. Produce graduates who are intelligent, religious, noble, independent, professional, and have advantages;
 2. Produce scientific works and creative works, both in the field of education and science that are superior and become references in the application of science and/or technology;
 3. Produce works of community service through the application of science and/or technology to create an independent, productive, and prosperous society;
 4. Realizing Unesa as an educational center and a scientific center based on the noble values of national culture;
 5. To produce effective and efficient institutional performance by creating a humanistic academic climate, transparent, accountable, responsive, and fair
- 

institutional management to ensure the quality of the implementation of the tridharma of higher education in a sustainable manner.



**SUSTAINABILITY
ASPECT
CONCERNED**
In Universitas Negeri
Surabaya





Universitas Negeri Surabaya is devoted to reducing the usage of energy by carefully using them. In a year, the electricity usage was decreased by about 10 %.

Energy Efficient Appliances



Eco air conditioner



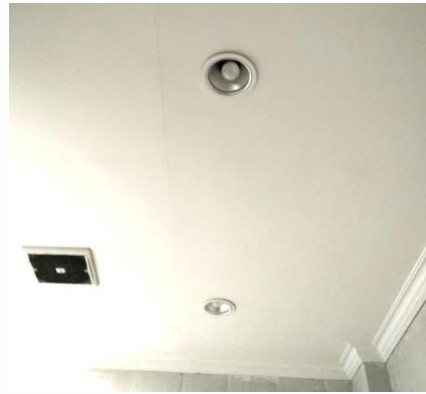
About > 50%



LED lights



About > 80%



To improve for 100% of the energy-efficient appliances implementation by procurement policy.

Renewable Energy Sources



Solar Panel

Solar Panel



_____ M²



Solar panels' use of renewable energy for street lights and office needs is about 10% of the total energy used. It will stay increasing with the new solar panel addition.



Water

Universitas Negeri Surabaya also performs water conservation, water recycling, water efficiency programs, and drinking water production as part of sustainability programs related to water.

Water Conservation

Universitas Negeri Surabaya supports a zero delta-Q policy on its drainage system to reduce the surface run-off by providing several ponds complete with door and pump house facilities. Furthermore, it is necessary to maintain the surface and subsurface drainage system to optimize the function. The water quality of the existing ponds is maintained by keeping fish in addition to regular testing.

The campus forest's objective is to maintain green open spaces and is an infiltration land to increase the capacity of groundwater as one of the water conservation efforts in the campus area. It has been succeeded in conserving about 50% to 75% of the water.



Lake/ponds



Campus forest



Ketintang pump house

Water Recycling

About > 50 % of university wastewater has been recycled and used for watering plants in the campus forest and the campus area. The water is also used to watering the sport field facilities in the campus area.

Universitas Negeri Surabaya has a Wastewater Treatment Installation located in the.....



Waste water treatment plant

Water Efficient Program

About > 50 % of buildings in Universitas Negeri Surabaya have installed water-efficient appliances, including high efficient toilet flush and water tap.



Toilet

Drinking Water Production

Provision of packaged drinks and gallons from water treatment in the campus environment.



Unesa drinking water factory



Waste

Universitas Negeri Surabaya is faithfully developed sustainable waste management practices with reducing, reusing, and recycling principles.

They provided separate waste bins between organic and inorganic waste as a starting point to attract the civitas academic awareness of their environment.

Organic Waste Treatment

Universitas Negeri Surabaya has innovations in processing organic waste into compost.



Process organic waste into compost



Compost house

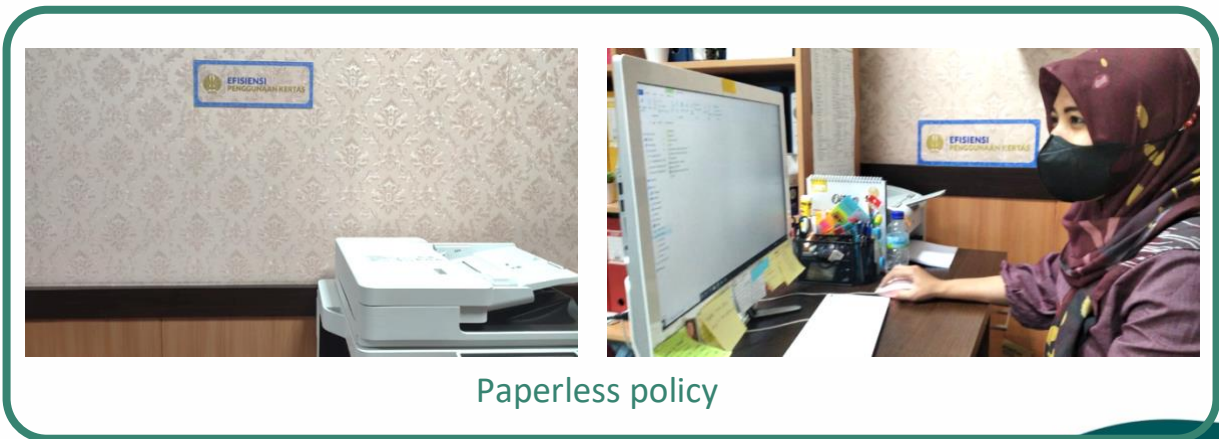


Separate garbage

Inorganic Waste Treatment

University efforts to reduce paper and plastic use are:

- E-office (paperless policy)
- Student assignments and reports in soft file form
- Innovation to turn plastic waste into more valuable items.



Paperless policy



Transportation

The movement of lecturers and students on campus from Origin to Destination, of course, requires transportation. The transportation in question is environmentally friendly transportation, such as Ontel Bikes. This is done to reduce exhaust emissions of motor vehicles. The stages of reducing vehicle exhaust emissions are carried out with the following steps: 1). Availability of Bikes near the vehicle parking, 2). Availability of Campus Bus with a large enough capacity, 3). Availability of Mini Buses, 4). Campus Bus Service Schedule and Mini Bus, 5). Availability of Integrated Shelters with Two and Four Wheeler Parking and Pedestrians and Sidewalks.



Jadwal Pagi

Bus	Keberangkatan Kampus Lidah	Kedatangan Kampus Ketintang	Bus	Keberangkatan Kampus Ketintang	Kedatangan Kampus Lidah
L1	06.00	06.30	K.1	06.00	06.30
L2	06.20	06.50	K.2	06.20	06.50
L3	07.00	07.30	K.3	07.00	07.30
L4	07.20	07.50	K.4	07.20	07.50
L1	08.00	08.50	K.1	08.00	08.50
L2	08.20	08.50	K.2	08.20	08.50
L3	09.00	09.30	K.3	09.00	09.30
L4	09.20	09.50	K.4	09.20	09.50
L1	10.00	10.30	K.1	10.00	10.30
L2	10.20	10.50	K.2	10.20	10.50
L3	11.00	11.30	K.3	11.00	11.30
L4	11.20	11.50	K.4	11.20	11.50

Jadwal Siang

Bus	Keberangkatan Kampus Lidah	Kedatangan Kampus Ketintang	Bus	Keberangkatan Kampus Ketintang	Kedatangan Kampus Lidah
L1	13.00	13.30	K.1	13.00	13.30
L2	14.00	14.30	K.2	14.00	14.30
L1	15.00	15.30	K.1	15.00	15.30
L2	16.00	16.30	K.2	16.00	16.30
L1	17.00	17.30	K.1	17.00	17.30
L2	18.00	18.30	K.2	18.00	18.30

One of the efforts to support the implementation of eco campuses is to reduce exhaust emissions from vehicles. Internal mobility is an effort made by Unesa to reduce vehicle exhaust emissions on campus. Campus bus and campus bicycle facilities are some of the programs that Unesa runs to reduce exhaust emissions.

Public transportation

The use of public transportation is expected to reduce the number of private vehicle users on campus by 70%

Program

Programs implemented by Unesa to support reducing vehicle exhaust emissions on campus:

1. Zero Emission Vehicle (ZEV): Car-free zone, Campus provides free bicycles, Starting to apply paid parking, Car-free day implementation
2. Shuttle Services: the campus provides internal and inter-campus shuttle services, equipped with bus shelters on campus.
3. Pedestrians: On-campus sidewalk facilities that are safe, comfortable, leafy, and friendly for users with disabilities.



Car-free zone



Shuttle service



Pedestrian



Number of Courses/Subjects Related to Sustainability

Universitas Negeri Surabaya has the university's commitment and actions towards reforestation and environmental sustainability. These commitments and actions relate to land and infrastructure management; use of energy, alternative energy, and handling related to climate change; management and recycling of waste and existing waste; saving water use, creating environmentally friendly transportation; and education in fostering a green generation through education, research and other supporting activities. In connection with the efforts made by the university in creating a new generation that cares about environmental sustainability, it is implemented in the field of education, it can be seen based on the number of courses related to sustainability offered at the State University of Surabaya as many as 62 environmental themed courses in the fields of education, transportation, environment, buildings, and the surrounding natural environment. These courses are offered in various study programs so that there are 1278 courses that can be taken by students. The courses are spread over 9 faculties that currently exist (postgraduate; faculty of engineering; faculty of mathematics and natural sciences; faculty of economics; faculty of social sciences and law; faculty of vocational sciences; faculty of sports science; faculty of education; and faculty of language and arts). Some of these courses are mandatory for students to take certain study programs. The sustainability courses offered are contained within the core courses. This course is programmed by students from Universitas Negeri Surabaya. The sustainability-related courses can be accessed through the website <http://siakadu.unesa.ac.id/prodi>. In addition, in supporting and succeeding in independent learning at an independent campus, these environmental and sustainable themed courses can also be programmed by students from outside the study program, different faculties, and can even be programmed by students from other universities.

Education and Research

Total Number of Courses/Subjects Offered

Contribution to sustainable discourse in the field of education and campus greening. As a form of commitment and concrete action on reforestation, sustainability in environmental, economic and social management is contained in the education sector in the form of sustainability-themed courses. The total number of courses offered in successive years starting in 2019, 2020, and 2021 are 3360, 3458, and 3478. These courses are spread across various faculties at the State University of Surabaya. Total number of courses offered in 2021 = 3478 courses (not modules). These courses can be accessed through the website <http://siakadu.unesa.ac.id/prodi>.

Total Research Funds Dedicated to Sustainability Research (in US Dollars)

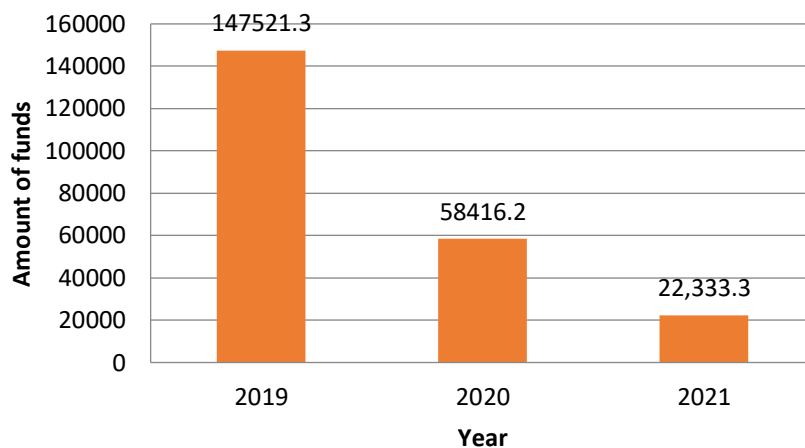


Figure 1. Total Research Funds Dedicated to Sustainability Research (in US Dollars)

Total research fund dedicated to sustainability research in 2019 = 147.521,3 US Dollars

Total research fund dedicated to sustainability research in 2020 = 58.416,2 US Dollars

Total research fund dedicated to sustainability research in 2021 = 22.333,3 US Dollars

The averaged annum last 3 years of research fund dedicated to sustainability research = 76.090,3 US Dollars.

Total data related to funding dedicated to sustainability research can be accessed in full through the website <https://simlppm.unesa.ac.id/home>.

Total Research Funds (in US Dollars)

The government and campuses also support the university's commitments and actions towards reforestation and the environment. This can be seen from the funds given to lecturers at Universitas Negeri Surabaya to be used to support education and research. The funds are given for purposes including those related to the field of education and research on sustainable themes. With these resources, it can encourage the entire academic community of Universitas Negeri Surabaya to contribute to reforestation, in environmental, economic, and social management.

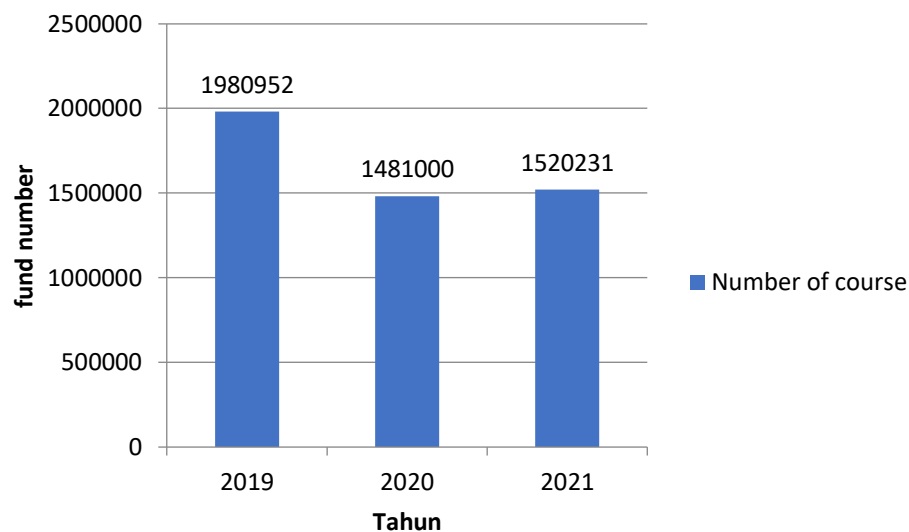


Figure 2. Total Research Funds (in US Dollars)

Total research fund in 2019 = 1380952 US Dollars

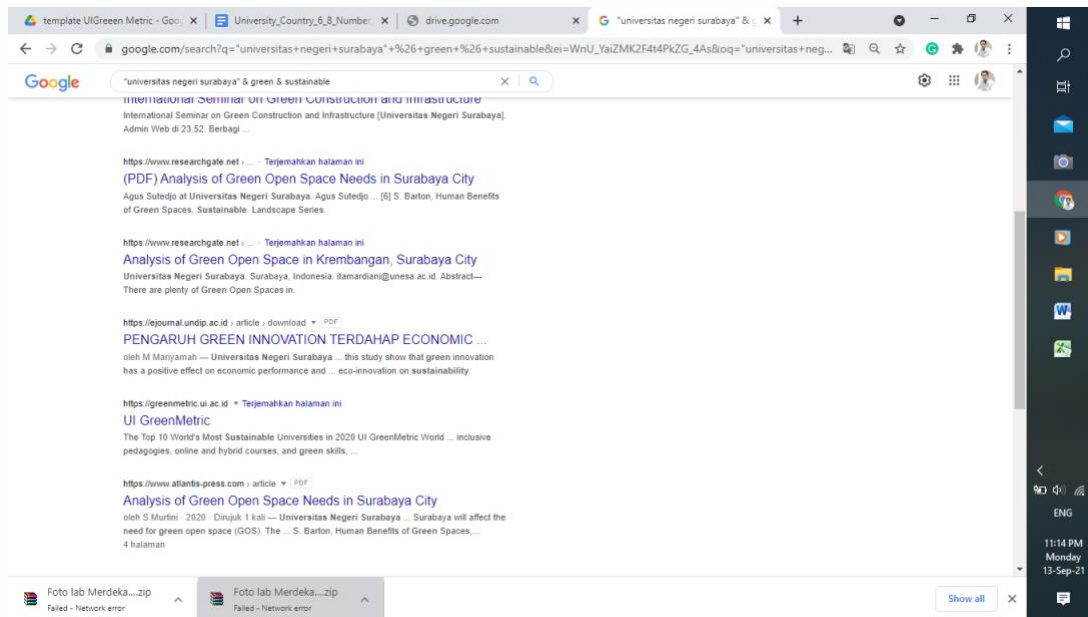
Total research fund in 2020 = 1481000 US Dollars

Total research fund in 2021 = 1520231 US Dollars

The averaged annum last 3 years of research fund = 1460728 US Dollars

Total research fund can be accessed in full through the website <https://simlppm.unesa.ac.id/home>.

Number of scholarly publications on sustainability



The total average of scientific publications with the theme of reforestation, sustainability in environmental, economic, and social management in the 2019-2021 school year per year for the last 3 years out of 9 publications.

Number of Events Related to Sustainability



The Unesa campus forest is located on the Tongue campus. The campus forest is also used as an independent learning laboratory.

Total number of sustainability/environment related events in:

2017/2018: 16

2018/2019: 17

2019/2020: 22

A total average per annum over the last 3 years of 55 events

The campus forest as an independent learning laboratory is a means of independent learning for students at the State University of Surabaya (UNESA). The campus forest, which has a reasonably representative area with various services for education and recreation, reinforces a green campus in Surabaya. The campus forest as a place for activities in open areas is very comfortable for academics at UNESA. Not only lecturers, students, or education staff who utilize and preserve the campus forest at UNESA, but the surrounding community also enjoys the campus forest as a place for recreation and education. Examples are coloring various animals in the campus forest for early childhood, meeting in open spaces, and exercising in the area. The utilities of campus forest include environmental conservation.

<https://lppm.unesa.ac.id/https-drive-google-com-drive-folders-1rofwsyswoidnvm8kqrywyuuufjuko/>

Sustainability Report

Environmental Statement Report in the field of education on reforestation and environmental sustainability on campus as a form of commitment and concrete action on reforestation, sustainability in environmental, economic, and social management, which is related to land and infrastructure regulation; use of energy, alternative energy, and handling related to climate change; management and recycling of waste and existing waste; saving water use, creating environmentally friendly transportation; as well as education in fostering a green generation through education, research and other supporting activities for the State University of Surabaya in 2021 can be accessed via this link: <https://.....>

.....

Number of university program(s) to cope with Covid-19 pandemic

There are many programs from campus for reforestation and environmental sustainability in order to help overcome the Covid-19 pandemic, of course, including in the field of education, online learning is carried out either through Vinesa, Google Classroom, etc. The next second program is given the opportunity to carry out research related to the prevention, handling, and overcoming of the dangers of Covid-19, etc. Programs in the field of community service in the field of education are also carried out online.



Number of sustainability community services project organised and/or involving students

Sustainable community service projects that are organized and involve students include activities in the independent learning laboratory at the independent campus, events related to the environment, waste management, and reforestation are also carried out on campus.

Number of sustainability-related startups

The number of startups in the field of education on reforestation and environmental sustainability on campus include online learning, learning innovations, implementation of environmental-themed Community Service Program, etc.

