



SUSTAINABILITY REPORT

2024



UNIVERSITAS NEGERI SURABAYA

VISION



“

To become
a **strong, adaptive, and innovative**
educational university
based on **entrepreneurship**



MISSION



1. Organizing education in the educational and non-educational fields with a tough, adaptive, and innovative character based on entrepreneurship.
2. Carrying out research and improving the quality of innovation in the educational and non-educational fields based on entrepreneurship.
3. Carrying out community service and disseminating innovation in the educational and non-educational fields based on entrepreneurship for the welfare of society.
4. Organizing Tridharma activities for higher education through a multi-campus system in a synergistic, integrated, harmonious, and sustainable manner by taking into account UNESA's advantages.
5. Carry out effective, efficient, transparent and accountable governance that guarantees quality on an ongoing basis
6. Carry out productive national and international collaboration in creating, developing and disseminating innovations in the educational and non-educational fields based on entrepreneurship.





1

SETTING AND INFRASTRUCTURE

Type of Higher Education Institution

Comprehensive

Climate

Tropical Wet and Dry

Number of Campus Site

5 Sites

Campus Setting

Urban

Total Campus Area

949,314.00 m²

Total Campus Ground Floor Area of Buildings

269.969 m²

Total Campus Buildings Area

755,000.00 m²

The Ratio of Open Space to Total Area.

> 90 - 95%

Total Area on Campus Covered in Forest Vegetation

> 35%

Total Area on Campus Covered in Planted Vegetation

>40%

Total Area on Campus for Water Absorption Besides Forest and Planted Vegetation

> 30%





Total Number of Regular Students (part time and full time)
43.211 Students

Total Number of Academic and Administrative Staff
1920 staffs

The Total Open Space Area Divided by Total Campus Population
>20-40/person

Total University's Budget (in US Dollars)
\$58.358.807

University's Budget for Sustainability Effort (in US Dollars)
\$14.590.000

Percentage of University's Budget for Sustainability Effort
22.67%

**Percentage of Operation and Maintenance Activities of Building
in One Year Period**
91%





Campus Facilities for Disable and Maternity Care

Facilities are partially available and operated

Security and Safety Facilities

Security infrastructure is available and fully functions and security responding time for accidents, crime, fire, and natural disasters is more than 10 minutes

Health Infrastructure Facilities for Students and Academic and Administrative Staff Wellbeing

Health infrastructure (first aid, emergency room, clinic and certified personel) available

Conservation: Plant (flora), Animal (fauna), and Wildlife, Genetic Resources for Food and Agriculture Secured in Either Medium or Long-Term Conservation Facilities

Conservation program fully implemented



2

**ENERGY
AND
CLIMATE CHANGE**



MORE THAN

75%

ENERGY
EFFICIENT
APPLIANCES
USAGE

TOTAL CAMPUS **SMART BUILDING** AREA 44,895.619 M²
SMART BUILDING IMPLEMENTATION 78.74%

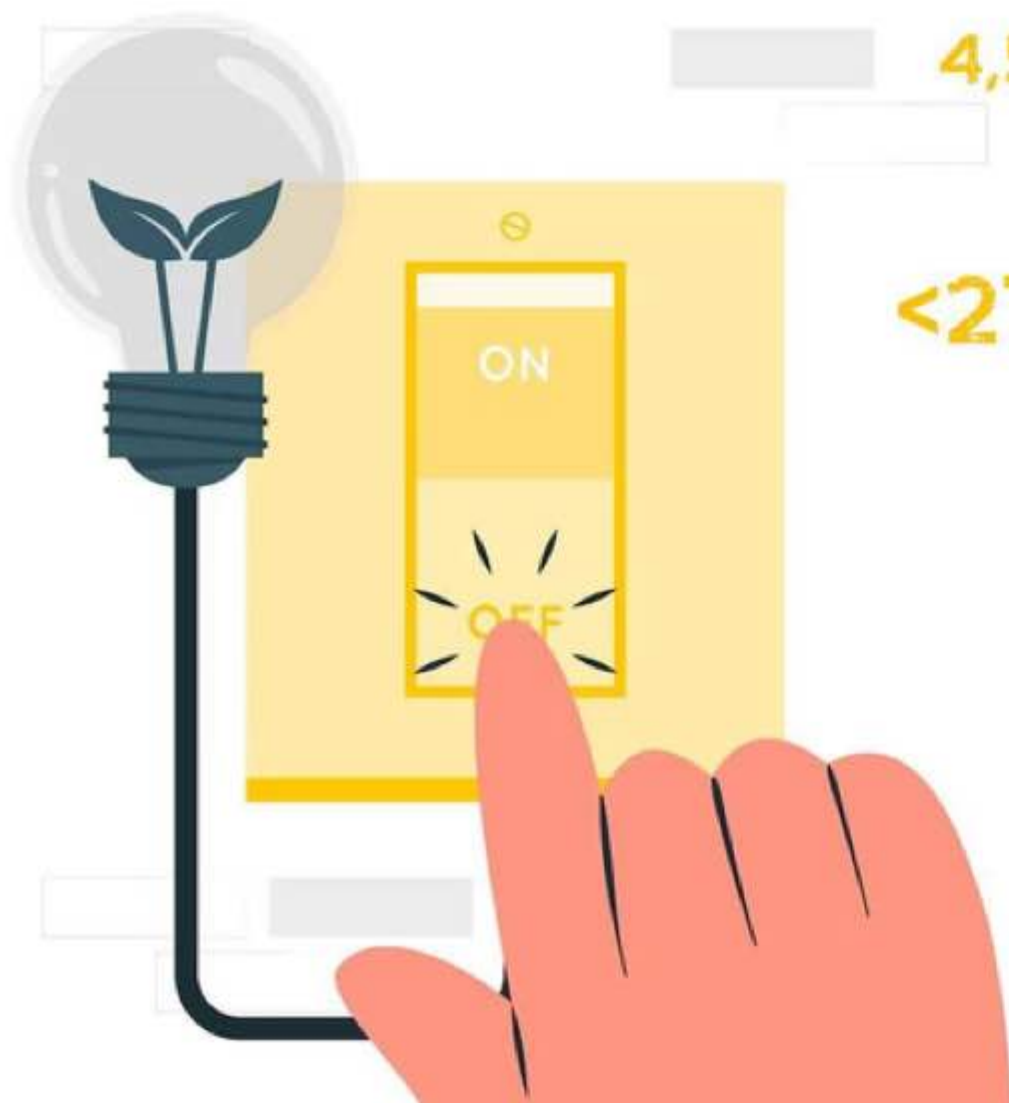
2 RENEWABLE
ENERGY SOURCES
IN CAMPUS

AMOUNT OF
THE ENERGY PRODUCED

9.640 KWH
CLEAN BIOMASS

+

59.400 KWH
SOLAR POWER



4,515,278.67
KWH

ELECTRICITY USAGE
PER YEAR

<279 KWH

TOTAL ELECTRICITY USAGE
DIVIDED BY
TOTAL CAMPUS POPULATION

5.3%

RATIO OF RENEWABLE
ENERGY PRODUCTION
DIVIDED BY
TOTAL ENERGY USAGE
PER YEAR

3 ELEMENTS

OF GREEN BUILDING IMPLEMENTATION AS REFLECTED IN ALL CONSTRUCTION AND RENOVATION POLICIES



UNESA
GREENHOUSE GAS EMISSION REDUCTION PROGRAM



AIMS TO REDUCE ALL **THREE SCOPES EMISSIONS** (SCOPE 1, 2 AND 3)



4,566.56
METRIC TONS

TOTAL CARBON FOOTPRINT

> 0.10 - 0.42
METRIC TON

TOTAL CARBON FOOTPRINT DIVIDED BY TOTAL CAMPUS POPULATION



MORE THAN 3
INNOVATIVE PROGRAMS IN ENERGY AND CLIMATE CHANGE

UNESA
PROVIDE TRAINING AND EDUCATIONAL MATERIALS FOR SURROUNDING COMMUNITIES, AT NATIONAL, REGIONAL, AND INTERNATIONAL LEVEL





Unesa provides **bicycles** for students and locals to ride in order to help the movement to limit the usage of motorized cars. This step can be used to start a healthy lifestyle by cycling. Cycling is undoubtedly highly essential and has a significant impact on lowering air pollution in Surabaya.

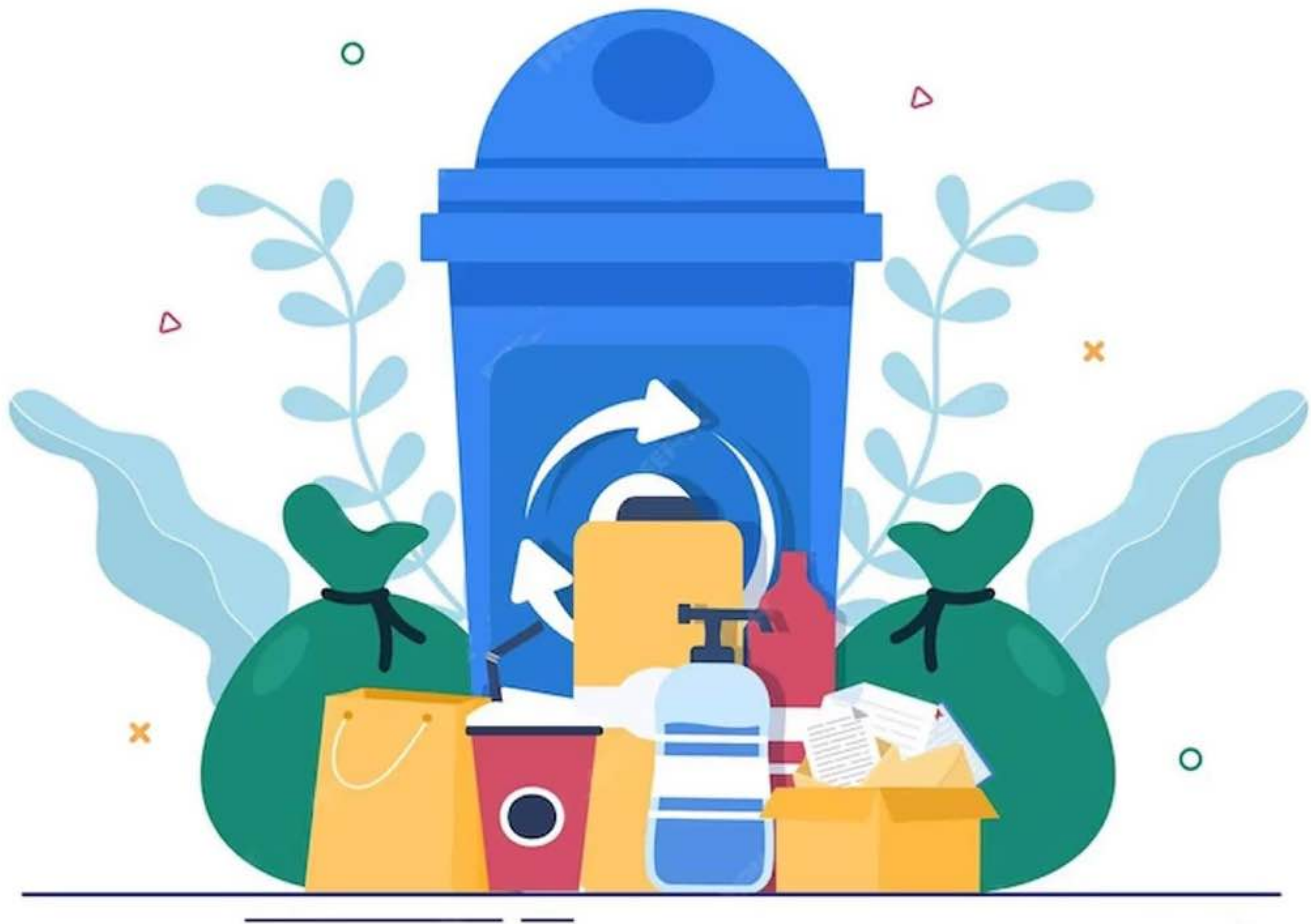


Eco-enzyme accelerates the biochemical processes in nature to manufacture usable enzymes from fruit or vegetable waste. Enzymes from "garbage" is one method of waste management that turns kitchen scraps into something very useful. In this situation, the eco-enzyme function will be used as a hand sanitizer, dish soap, and floor cleaning soap



UNESA supports and facilitates these organizations in instilling environmental awareness. One concrete example of activities conducted by these organizations includes **tree planting** by REE and UNESA. By planting trees, it will bring about broader benefits, both for humans and the environment





3

WASTE

3R

Partial
(> 50% - 75% of waste)
program for
university's waste



MORE THAN 3 PROGRAMS

to **reduce** the use of **paper and plastic**
on campus

WASTE TREATMENT



ORGANIC

458 TON

Organic Waste
Produced

458 TON

Organic Waste
Treated

Treatment Partial
(> 65 - 85% treated)



INORGANIC

30.5 TON

Inorganic Waste
Produced

30.5 TON

Inorganic Waste
Treated

Extensive Treatment
(>85% treated)



TOXIC

0.15 TON

Toxic Waste
Produced

0.108 TON

Toxic Waste
Treated

Extensive Treatment
(>85% treated)



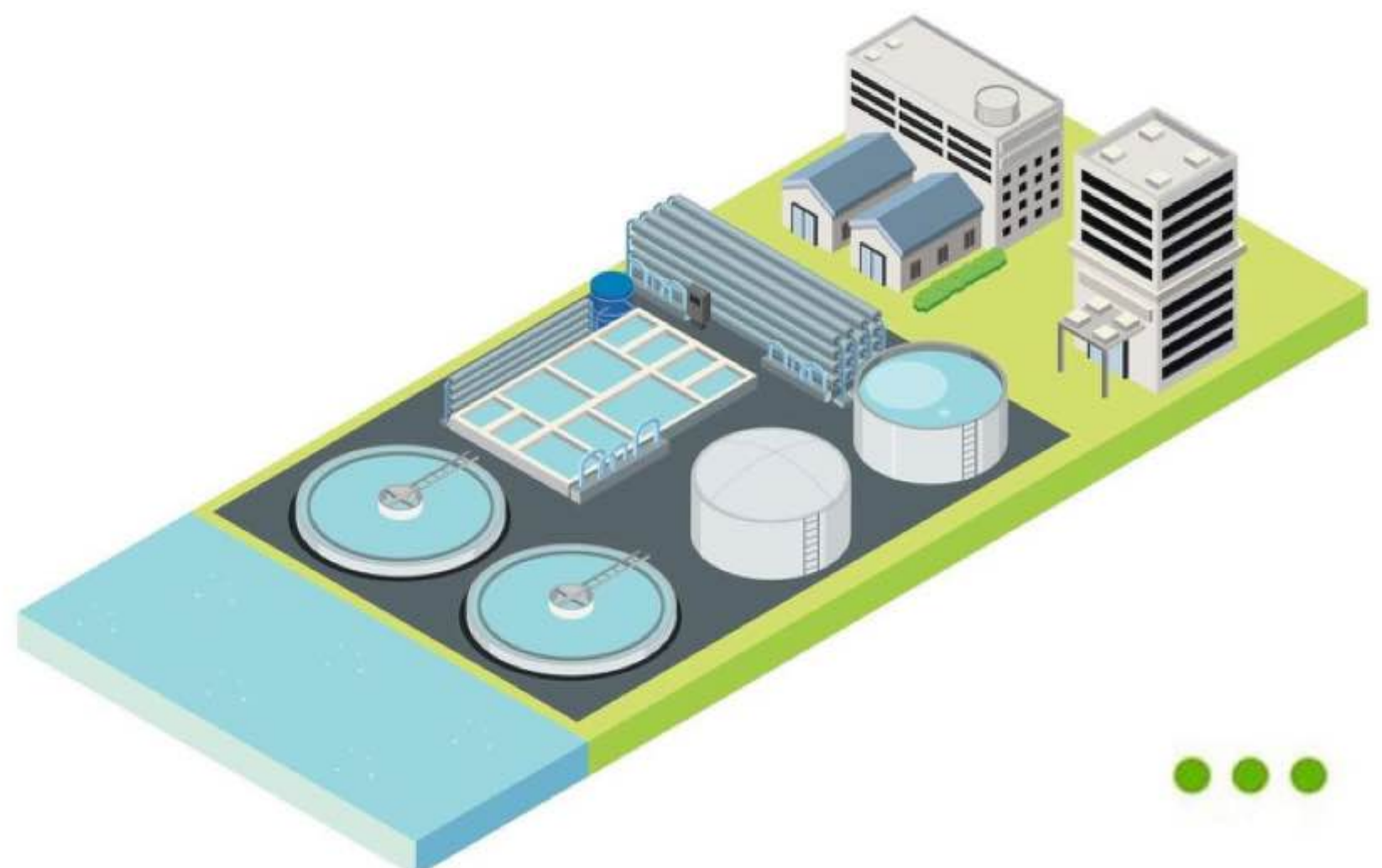
Eco-enzyme is a multifunctional solution or liquid created through fermentation from organic waste such as fruit and vegetables. Pouring these compounds into lake water offers numerous advantages, including cleaning and breaking down harmful contaminants in the water.

Eco-bricks, a product created from plastic mineral water bottles filled with sorted plastic sachets that have been cleaned with soap. Following that, the plastic sachets are chopped into small pieces to aid in the drying process. The dried sachet pieces are then placed and crushed in a plastic drinking bottle until it is completely full. Unesa students will be required to collaborate in the collection, sorting, and processing of waste in this waste recycling program



Compost is made at Unesa from organic waste in the form of dried leaves and branches, which are cut and then placed in the composter. Water will be poured to the composter, and the compost will be allowed to mature for 2-3 months

UNESA
Sewage Disposal
 Treated with
 Tertiary Treatment





4

WATER



> 50%

> 75%

 Water Efficient
Appliances Installed

 Treated Water
Consumed

 Water Recycled

 Water Conserved





Policy and programs for water pollution control are **fully implemented & monitored regularly**

Universitas Negeri Surabaya **prevents and reduces all sorts of water pollution**, particularly those caused by land-based activities. UNESA manages the lake environment (reservoir) jointly at both the Lidah Wetan and Ketintang campuses. The management strategy is to sustain the biotic and abiotic quality of the lake ecosystem through a variety of activities.



Water Efficient Appliances



Drinking Water Treatment
(Air Minum Unesa)

Water Recycling Programs





5

TRANSPORTATION

30 Cars

Actively Used and Managed by University



372 Cars

Entering the University Daily

5882 Motorcycles

Entering the University Daily



> 0.125-0.5

Total number of vehicles

(cars and motorcycles) divided by total campus's population



Shuttle service is provided by university and the university contributes a part of the cost.



Zero Emission Vehicles (ZEV)

are **Available**, and **Provided** by University for **Free**

with Average Number of **75 ZEV** on Campus Per Day



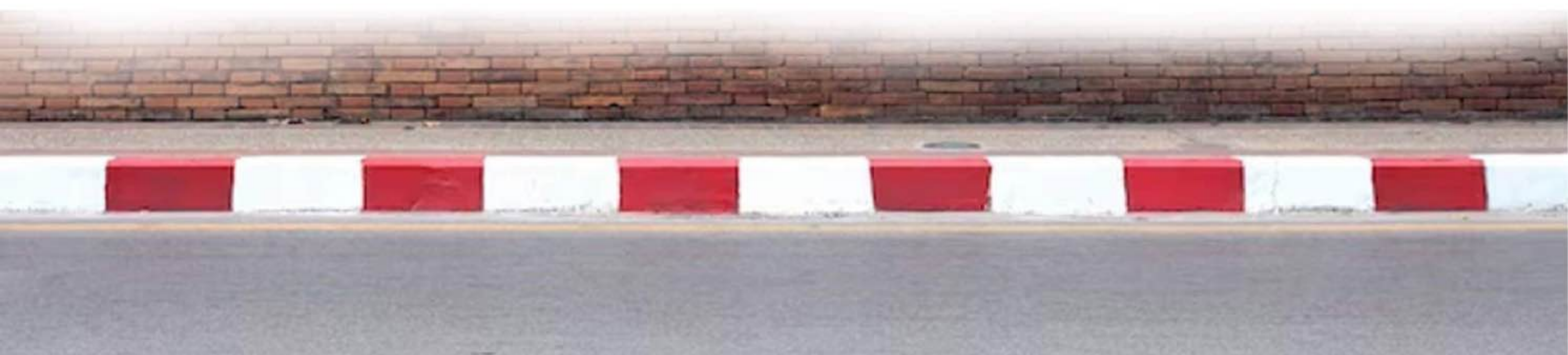
The total number of Zero Emission Vehicles divided by total campus population is **0.00297**

16.455 M² Ground Parking Area Available, with **Ratio** of Parking Area to Total Campus Area are **1.73%**



Less than 10% decrease from Transportation program designed to limit or decrease the parking area on campus for the last 3 years with **> 3 transportation initiatives** to decrease private vehicles on campus

Pedestrian paths are available, designed for safety, convenience, and in some parts provided with **disabled-friendly features**





6

EDUCATION AND RESEARCH

24.1% ⁺

Ratio of Sustainability Course

2005 Courses/Subjects Related to Sustainability Offered From **6656** Total Courses/Subjects Offered

53.3% [◆]

Ratio of Sustainability Research Funding

\$1,492,935 Total Research Funds Dedicated to Sustainability Research From **\$2,457,674** Total Research Funds ⁺



1090

Scholarly Publications on Sustainability Published for The Past 3 Years



123 [◆]

Events Related to Sustainability for The Past 3 Years



30 ⁺

Activities Organized by Student Organizations Related to Sustainability Per Year





UNESA sustainability website is available, accessible, and updated occasionally at sustainability.unesa.ac.id/

Sustainability Report is Published Annually



MORE THAN 3

- Events of Cultural Activities
- University Programs with International Collaborations
- Sustainability Community Services Project Organised and Involving Students



UNESA Has >15 Sustainability-related Startups